

Judy Allen, Realtor
601-955-9907
Judy@TomSmithLand.com
TomSmithLand.com



Tom Smith Land and Homes
601 Crescent Blvd, Ste, 103
Ridgeland, MS 39157
601-8898-2772

LOCATION, LOCATION, LOCATION!!! 107 ACRES, RANKIN COUNTY, MS

- 107 Acre Prime Development Land
- Beautiful Country Living
- 20 Additional Acres Available
- Live Creek Flows thru Property
- Available Sewer/ Water/ Power
- Located 1 Mile East of Florence
- Beautiful Large Oak Trees
- Can be Divided



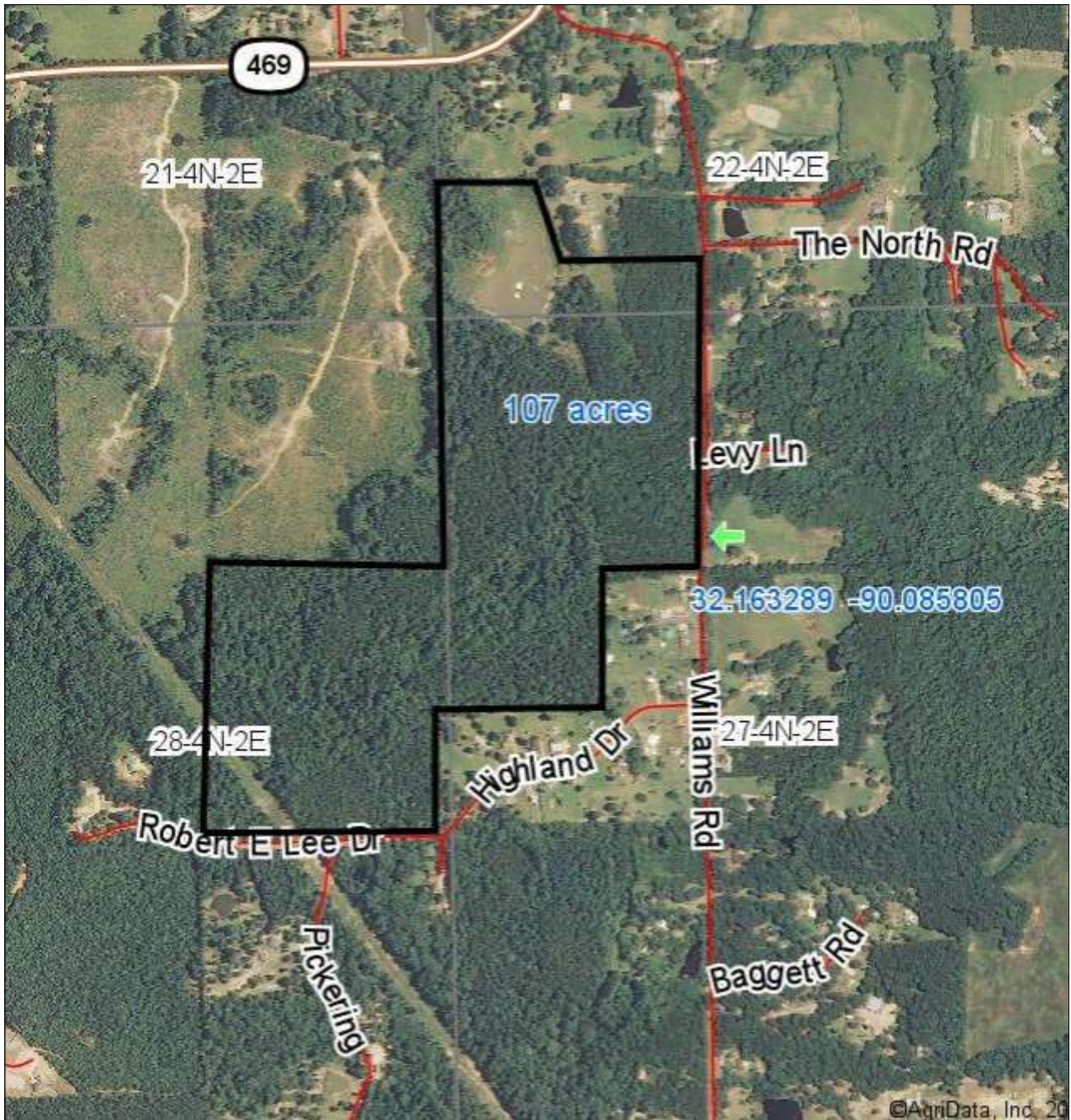
Rankin County Development Tract! This 107 tract is in the heart of Rankin County, Located just outside the city limits of Florence. You can enjoy country living with the conveniences of the city with easy access to Hwy 49. The property features large oak trees with beautiful rolling land and a live creek. Property is ready to be cleared for your personal enjoyment or to start the next residential neighborhood. Directions: From Hwy 49 and Hwy 469 in Florence go east on Hwy 469 for .08 miles then turn right onto Williams road, go for .03 miles and property is on your right.

Information is Believed to be Accurate but not Guaranteed





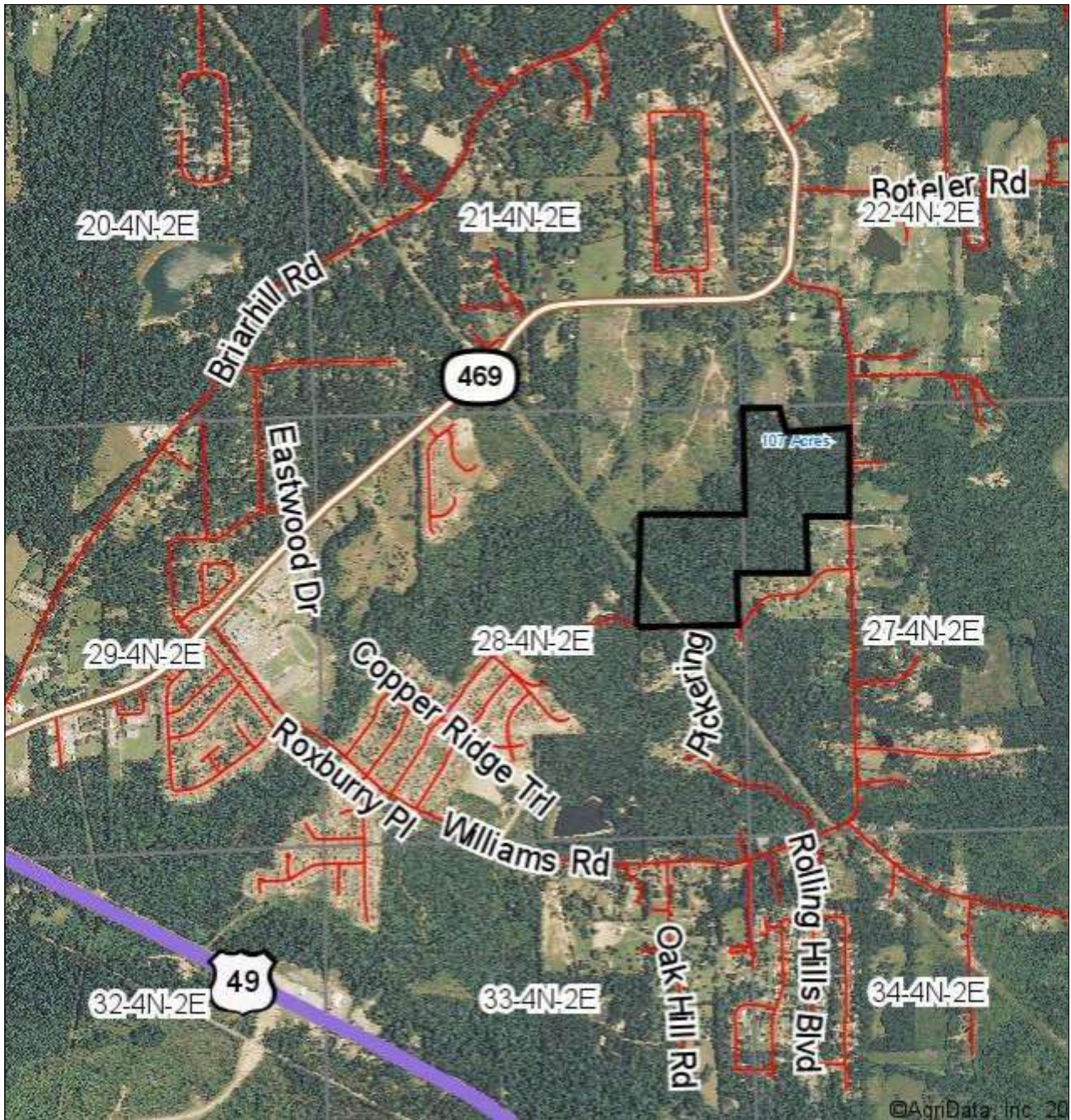
Judy Allen, Realtor
601-955-9907
Judy@TomSmithLand.com
TomSmithLand.com



Aerial Photo

Judy Allen, Realtor
601-955-9907
Judy@TomSmithLand.com
TomSmithLand.com

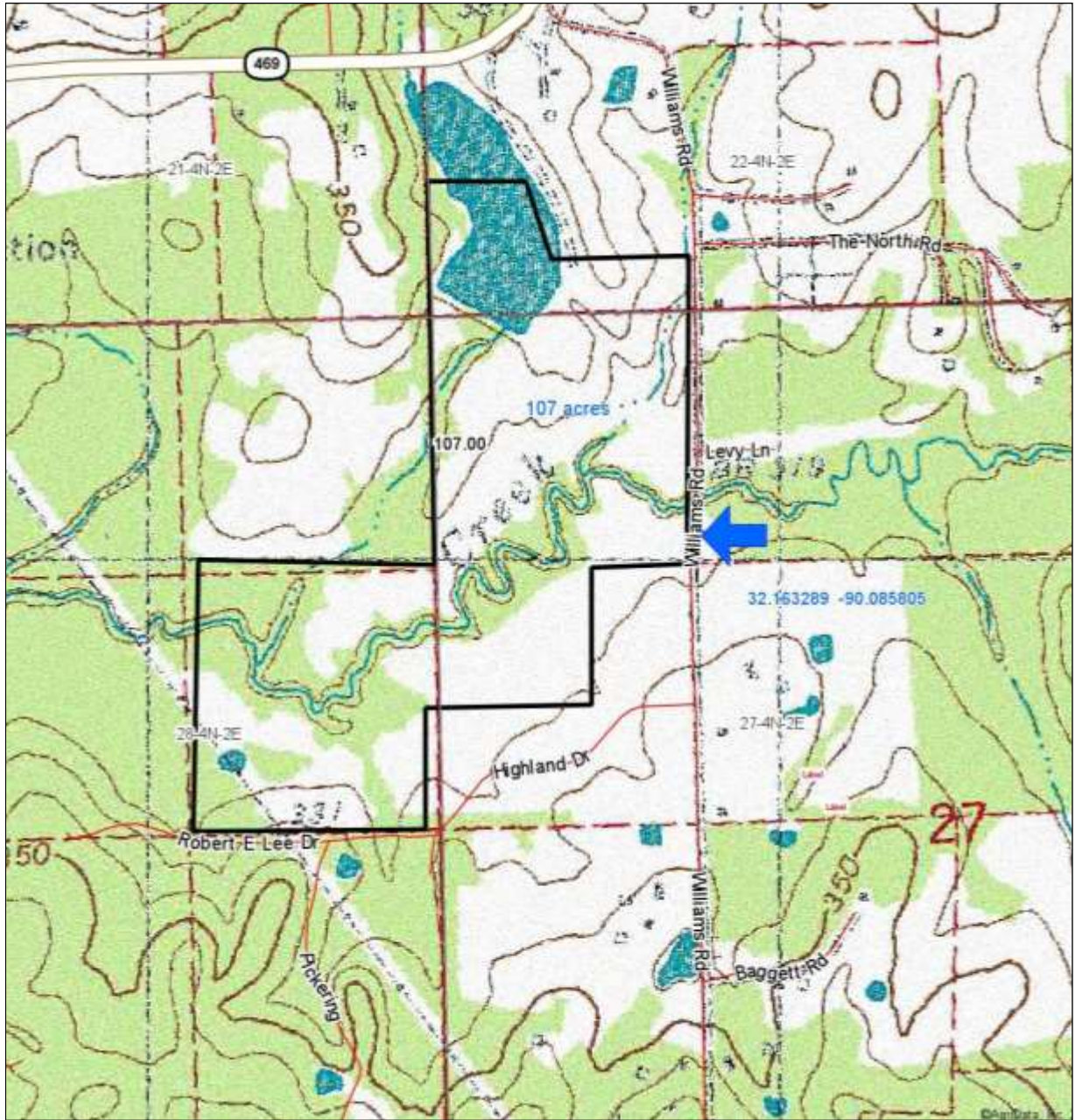




Aerial Photo

Judy Allen, Realtor
601-955-9907
Judy@TomSmithLand.com
TomSmithLand.com

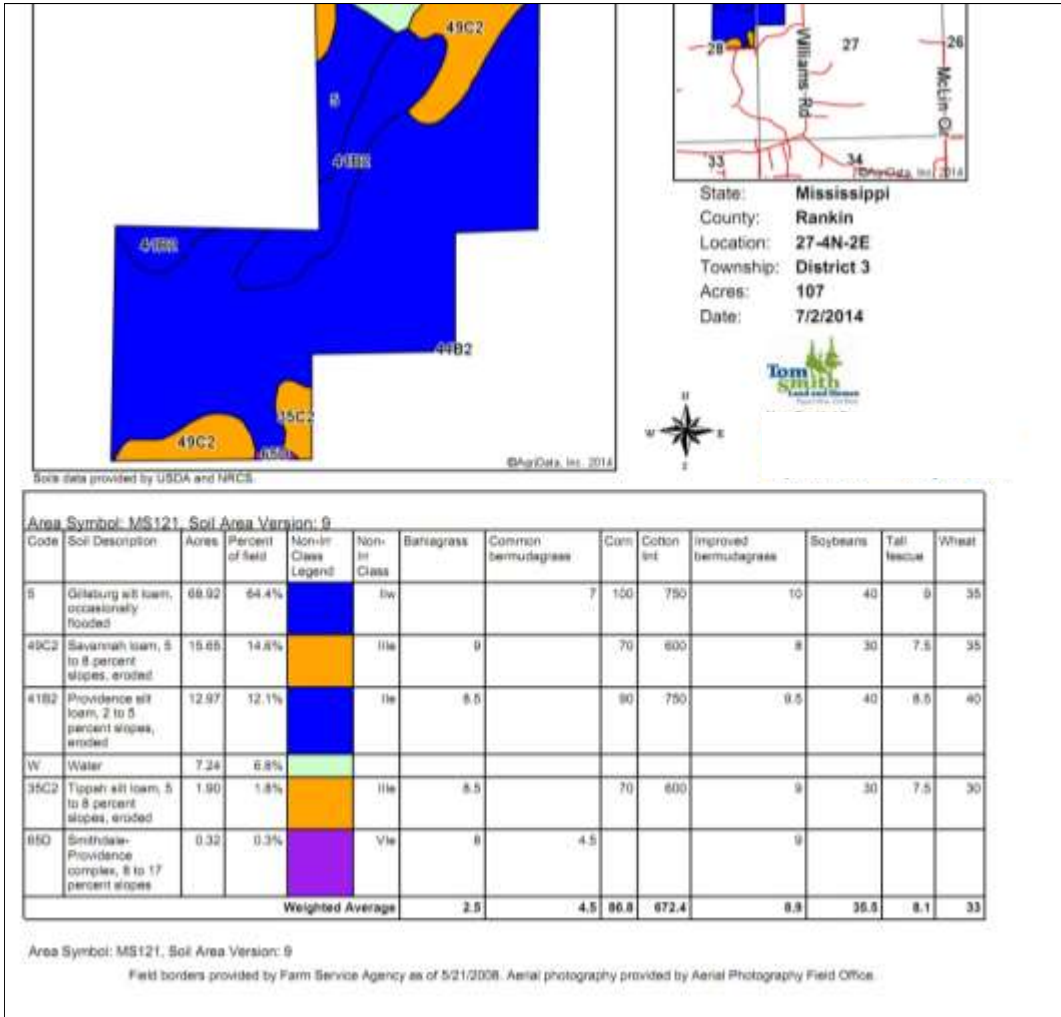




Topo Map

Judy Allen, Realtor
 601-955-9907
 Judy@TomSmithLand.com
 TomSmithLand.com





Soil Map

Judy Allen, Realtor
601-955-9907
Judy@TomSmithLand.com
TomSmithLand.com





Directions: From Hwy 49 and Hwy 469 in Florence go east on Hwy 469 for .08 miles then turn right onto Williams road, go for .04 miles and property is on your right.

Directional Map

Judy Allen, Realtor
601-955-9907
Judy@TomSmithLand.com
TomSmithLand.com



Information is Believed to be Accurate but not Guaranteed