

Judy Allen, Realtor
601-955-9907

Judy@TomSmithLand.com
TomSmithLand.com



Tom Smith Land and Homes
601 Crescent Blvd, Ste, 103
Ridgeland, MS 39157
601-8898-2772

LOCATION, LOCATION, LOCATION!!! 107 ACRES, RANKIN COUNTY, MS

- 107 Acre Prime Residential Development Land
- Just Minutes from Hwy 49
- Florence School District
- 20 Additional Acres Available
- Live Creek Flows thru Property
- Available Sewer/ Water/ Power
- Located 1 Mile East of Florence
- Beautiful Large Oak Trees
- Can be Divided
- Paved Frontage on Williams Road and also Fronts Robert E Lee Road



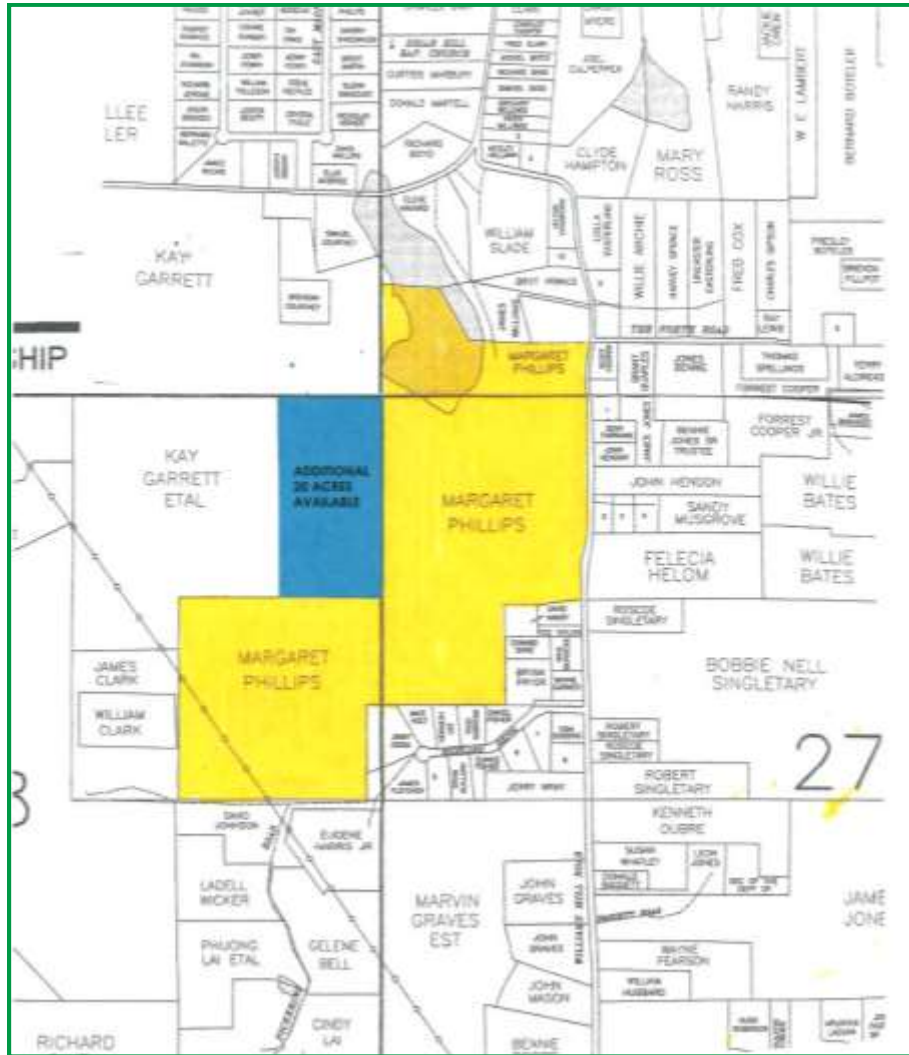
Rankin County Development Tract! This 107 tract is in the heart of Rankin County, Located just outside the city limits of Florence. You can enjoy country living with the conveniences of the city with easy access to Hwy 49. The property features large oak trees with beautiful rolling land and a live creek. Property is ready to be cleared for your personal enjoyment or to start the next residential neighborhood. *Directions:* From Hwy 49 and Hwy 469 in Florence go east on Hwy 469 for .08 miles then turn right onto Williams road, go for .03 miles and property is on your right.

Information is Believed to be Accurate but not Guaranteed





Judy Allen, Realtor
601-955-9907
Judy@TomSmithLand.com
TomSmithLand.com

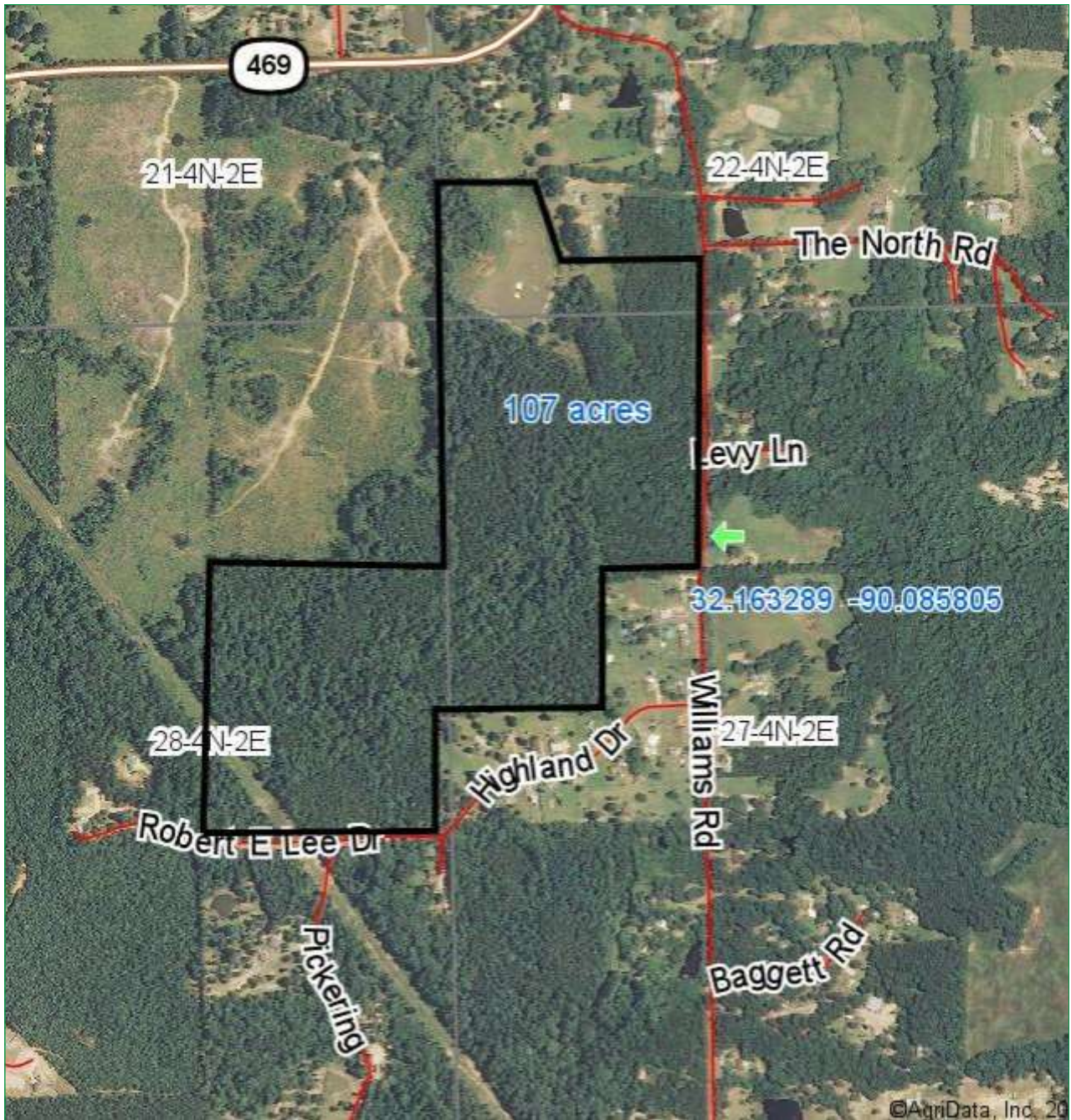


Ownership Map

Additional 20 Acres is Available for Purchase as Highlighted Above, Please Inquire for Details

Judy Allen, Realtor
 601-955-9907
 Judy@TomSmithLand.com
 TomSmithLand.com

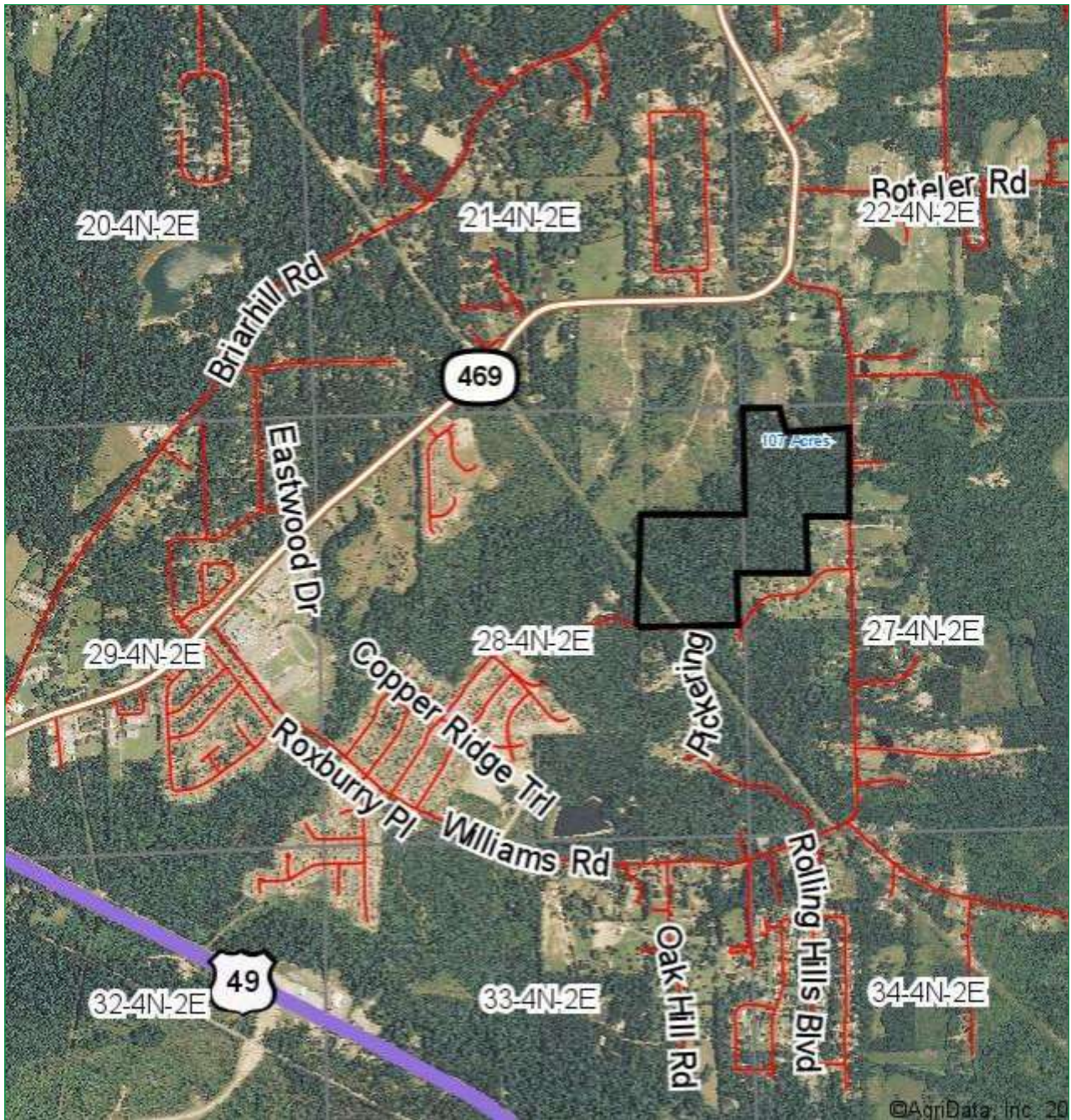




Aerial Photo

Judy Allen, Realtor
601-955-9907
Judy@TomSmithLand.com
TomSmithLand.com

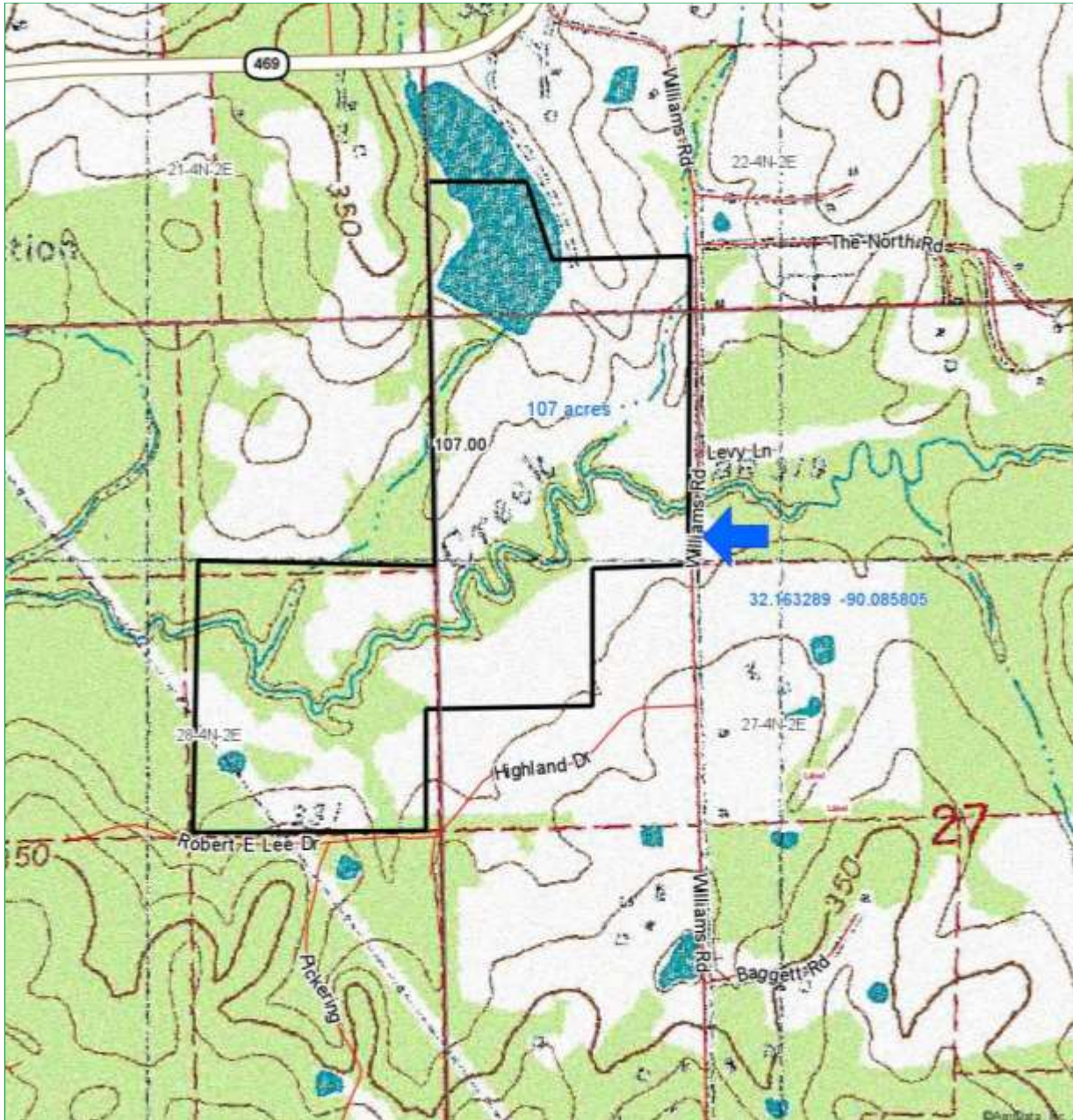




Aerial Photo

Judy Allen, Realtor
601-955-9907
Judy@TomSmithLand.com
TomSmithLand.com

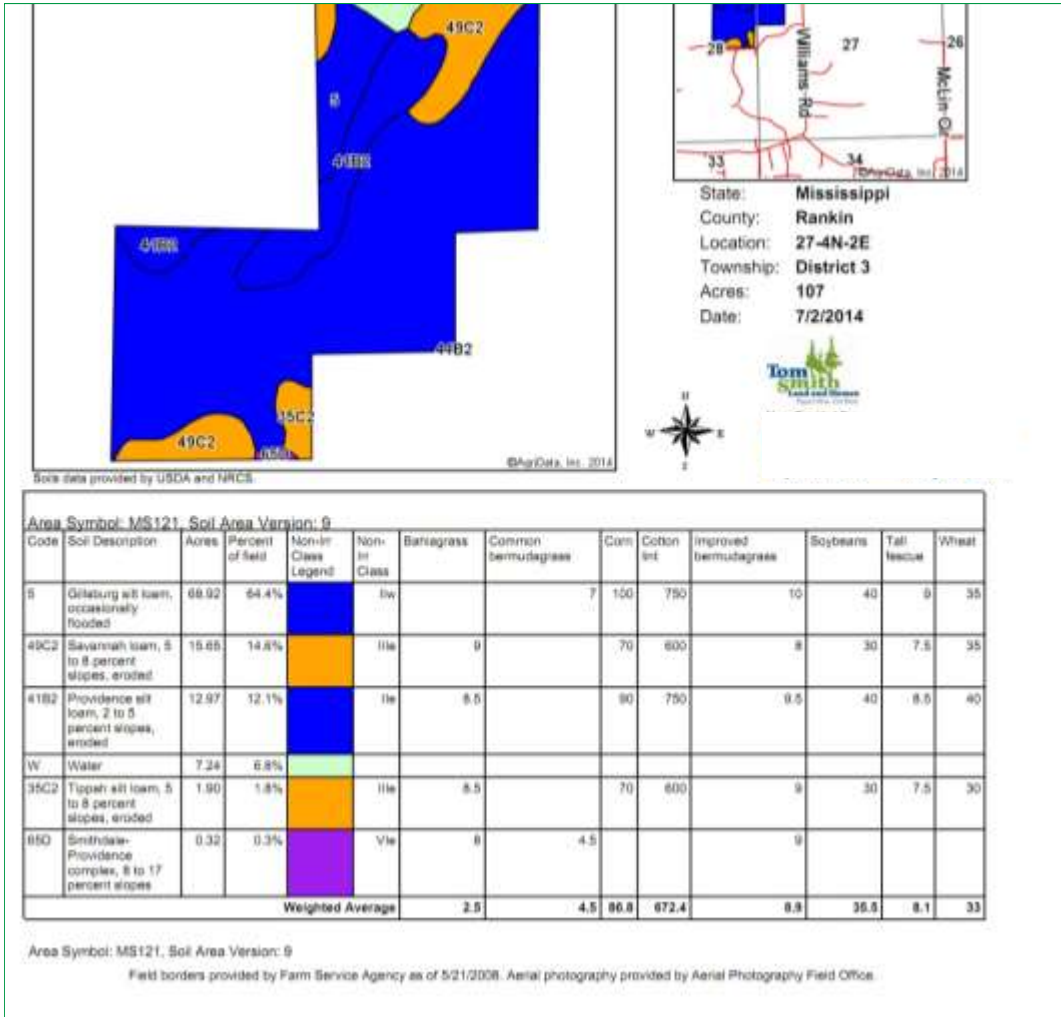




Topo Map

Judy Allen, Realtor
 601-955-9907
 Judy@TomSmithLand.com
 TomSmithLand.com





Soil Map

Judy Allen, Realtor
601-955-9907
Judy@TomSmithLand.com
TomSmithLand.com





Directional Map

Directions: From Hwy 49 and Hwy 469 in Florence go east on Hwy 469 for .08 miles then turn right onto Williams road, go for .04 miles and property is on your right.

Judy Allen, Realtor
 601-955-9907
 Judy@TomSmithLand.com
 TomSmithLand.com

