

Steve Martens

Mobile: 601-573-2962

steve@tomsmithland.com

www.tomsmithlandandhomes.com



Main Office: 601-898-2772

Fax: 601-898-8278

601 Crescent Blvd. Ste 103

Ridgeland, MS 39157



9.7 Acres in Rankin County, Mississippi CLOSE TO EVERYTHING

- ◆ Less than 1 mile to I-20
- ◆ Frontage on Hwy 475
- ◆ Convenient to Shopping
- ◆ Utilities Available
- ◆ Location, Location, Location
- ◆ This property could have many different possibilities
- ◆ Currently Zoned R-1

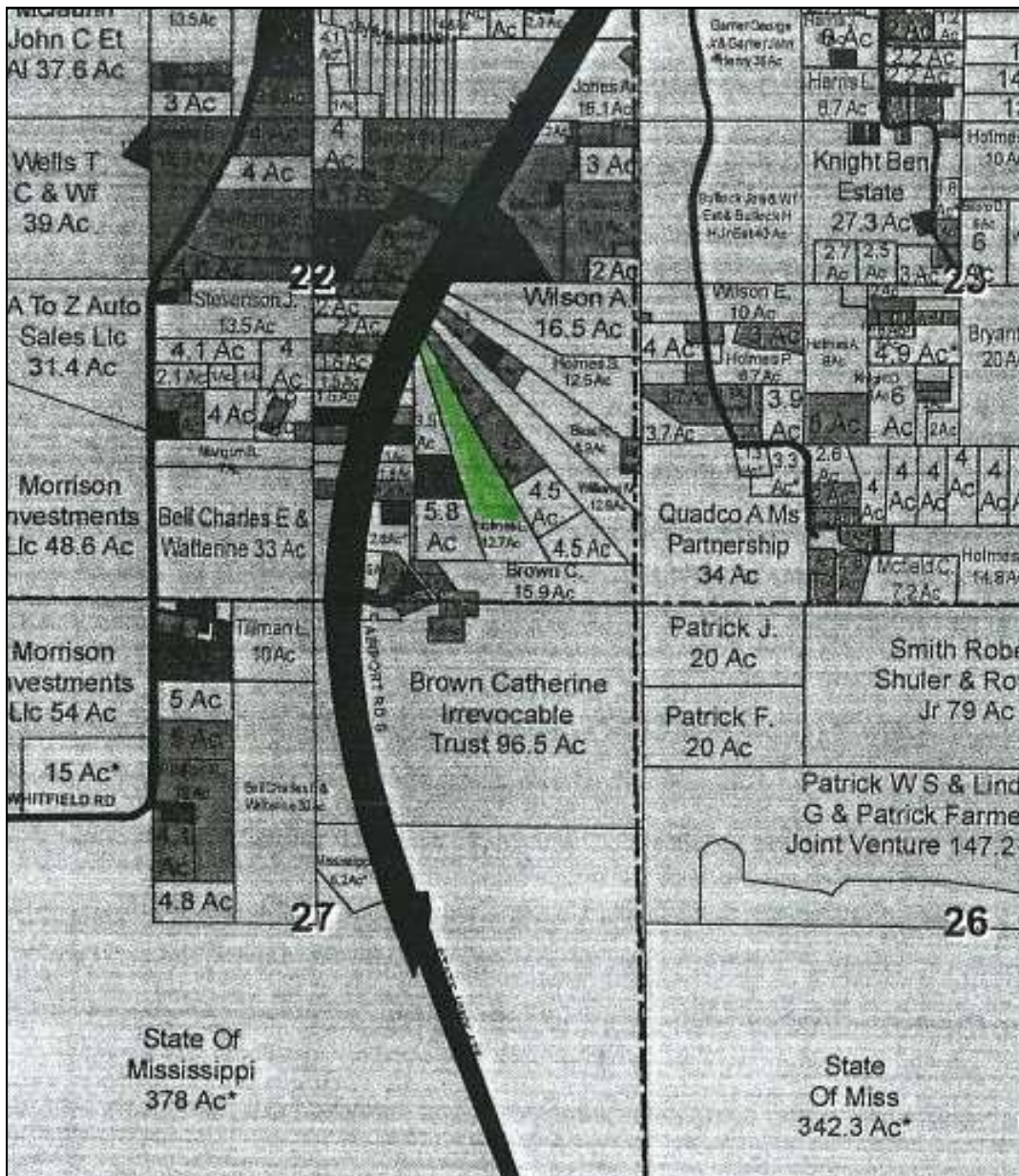
9.7 Acres that is close to everything. This property is less than 1 mile to I—20. This property is within minutes of the Jackson International Airport. It is also within minutes to fast food, shopping, and all conveniences. There is already a paved road going up the south side of this property.

Directions: I-20 East to Airport Rd Exit — go South on Hwy 475 (Airport Rd) -

The property is on the left.



Information is Believed to be Accurate but not Guaranteed

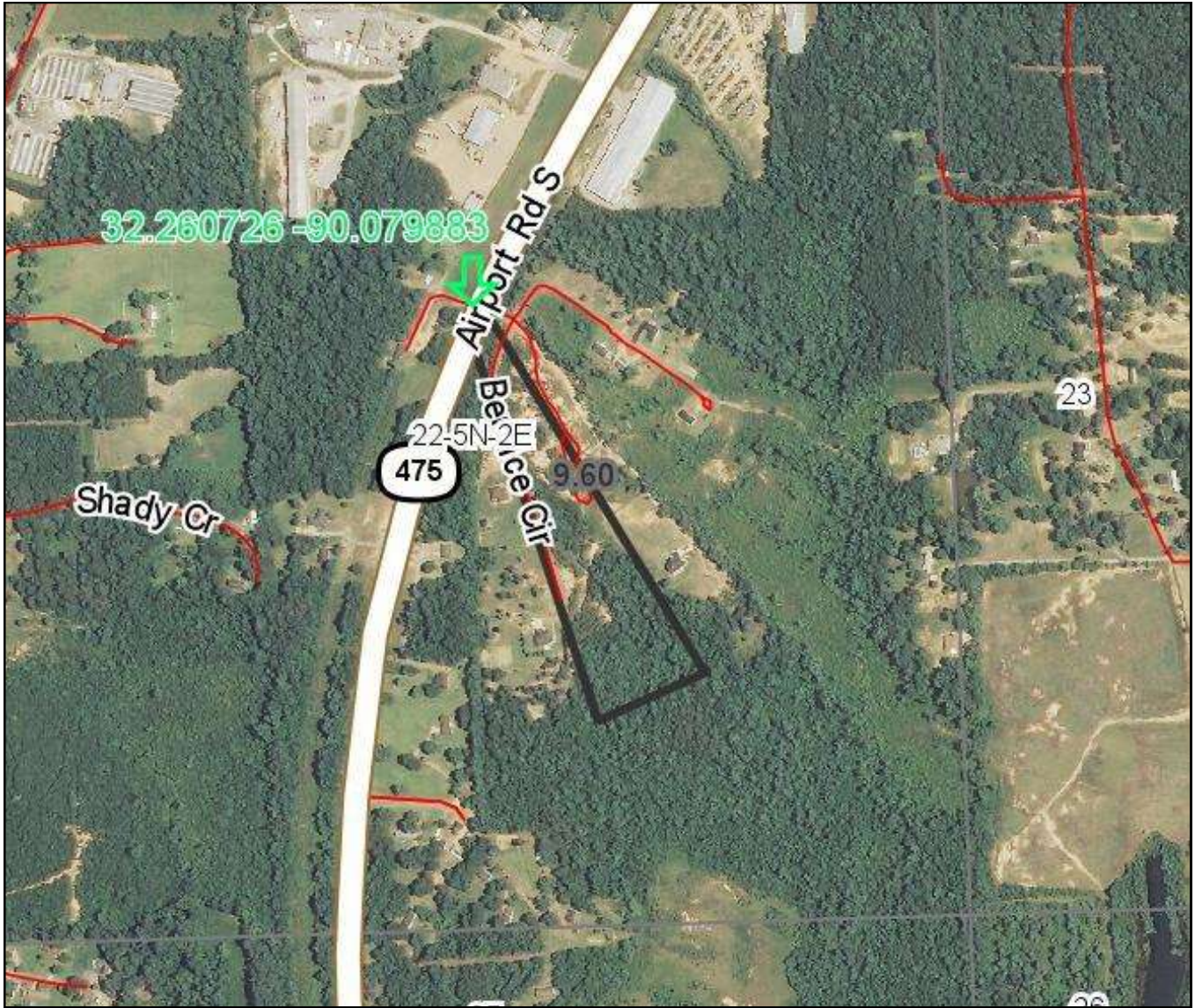


Ownership Map



Steve Martens
 601-573-2962
www.tomsmithlandandhomes.com
 601 Crescent Blvd Ste 103
 Ridgeland, MS 39157





Aerial Map



Steve Martens
601-573-2962
www.tomsmithlandandhomes.com
601 Crescent Blvd Ste 103
Ridgeland, MS 39157





Topo Map



Steve Martens
601-573-2962
Www.tomsmithlandandhomes.com
601 Crescent Blvd Ste 103
Ridgeland, MS 39157





Directions: I-20 East to Airport Rd Exit. Take Hwy 475 (Airport Rd) South less than 1 mile and the property is on the left.



Steve Martens
601-573-2962
Www.tomsmithlandandhomes.com
601 Crescent Blvd Ste 103
Ridgeland, MS 39157

